

# Dock leveller control LB 700

with auto-return function

Control for dock levellers  
with hinged wedge lip or extendible lip

## Approvals and certificates

LB 700

Type test according to:  
DIN EN 1398:2009-07 § 5.4.2  
DIN EN ISO 13849-1: 2008-12  
TÜV NORD CERT GmbH



## LB 700 – Control for dock levellers

with hinged wedge lip (1 valve)



with extendible lip (2 valves)



### Technical data

- Supply voltage: 3~230V, PE / 3N~400V, PE
- Operating frequency: 50 Hz
- Max. power of the hydraulic unit: 1,5 kW
- Valve voltage: 24V DC
- Max. valve current: 1,0 A
- Max. power consumption of the control: 30 VA
- Max. power of traffic lights: 40 W
- Max. power of loading zone lighting: 150 W
- Permissible temperature range: +5°...+40°C

### Housing

- Dimensions B x H x T [mm]: 189 x 254 x 143
- Degree of protection: IP65
- Fitted with CEE-plug and 0,5m cable ready for connection
- Integrated mains switch
- Connection cable to dock leveller, insertion from bottom or top

### Description

- Integrated control device  
OPEN-AUTORETURN (hinged wedge lip);  
OPEN-EXTEND-AUTORETURN (extendible lip)
- Settings via selector switch with digital display
- Nine programmable relay contacts for implementing various functions of the dock leveller

### Functions

- Extending and retracting the dock leveller
- Adjustable extending and retraction times
- Various safety functions for releasing and locking the dock leveller, for example through:
  - Door contact
  - Vehicle detector
  - Wheel-block sensor
  - Position sensor

- Control of two traffic lights and one loading zone light with additional activatable timer:
  - Red-green traffic light outside
  - Red-green traffic light inside
  - Spotlight to illuminate the loading zone
- Status and information display (including display of two most-recent faults)
- Cycle counter (non-resettable)
- Maintenance-cycle counter:
  - Setting range: 1,000 – 99,000 cycles
  - Display or switch to hold-to-run operation once the maintenance-cycle limit is reached
- Energy-saving mode:  
Optional switching off of the valve voltage after reaching the final limit positions

### Additional functions and devices

- Additional control device:  
For operation of sectional-door-drive ELEKTROMATEN TSE 5.24 WS with integrated hold-to-run door control T801 as an economic total solution (see catalogue sheet 3.021)
- Shelter function:  
For controlling a door seal; the door seal provides an energy-efficient contact between door and vehicle; Two tubular motors and one compressor can control a door seal using the LB 700; this function can be started automatically or manually

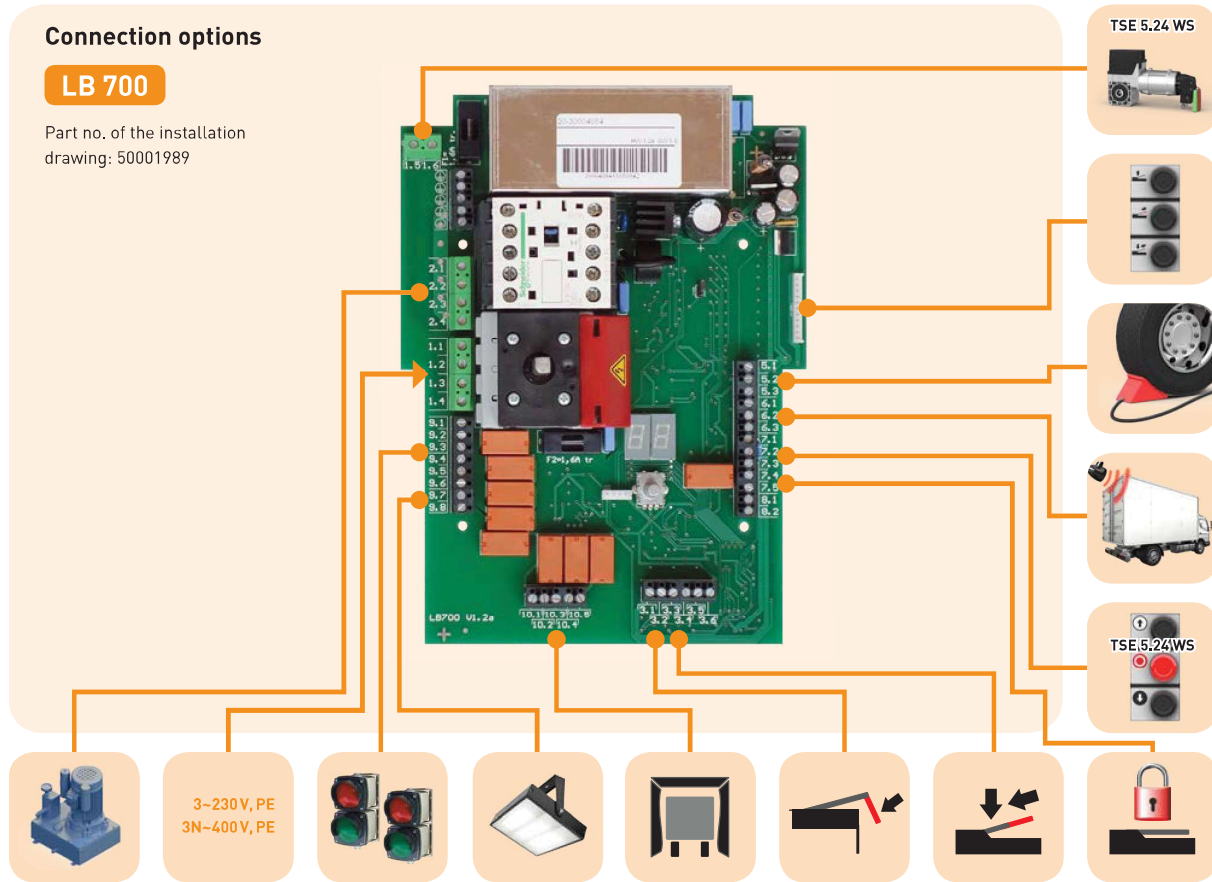
LB 700



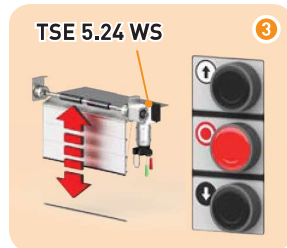
## Connection options

### LB 700

Part no. of the installation drawing: 50001989



## Dock leveller control



### Dock leveller control

Designation	Description	Part no.
LB 700 hinged wedge lip	1 For dock levellers with hinged wedge lip (1 valve)	20070000.00001
LB 700 extendible lip	2 For dock levellers with extendible lip (2 valves)	20070000.00002

### Zusatzfunktionen

Designation	Description
Control device for ELEKTROMATEN TSE 5.24 WS	3 For operation of the ELECTROMATEN TSE 5.24 WS with integrated hold-to-run door control T801 (see catalogue sheet 3.021)
Shelter function	4 For controlling a door seal with three potential-free relay contacts

### Dock leveller control with additional function

Designation	Description	Part no.
LB 700 hinged wedge lip + Control device	1 with additional function 3	20070000.00003
LB 700 hinged wedge lip + Shelter	1 with additional function 4	20070000.00005
LB 700 hinged wedge lip + Control device / Shelter	1 with additional function 3+4	20070000.00007
LB 700 extendible lip + Control device	2 with additional function 3	20070000.00004
LB 700 extendible lip + Shelter	2 with additional function 4	20070000.00006
LB 700 extendible lip + Control device / Shelter	2 with additional function 3+4	20070000.00008